

# Choose Cathedral on every Occasion

FACILITIES FOR HIRE



**The Cathedral School**  
of St Anne & St James  
TOWNSVILLE

*The Cathedral School offers modern facilities situated on beautiful school grounds characterized by towering rain trees and a picturesque lagoon. Please visit the school's website for a virtual tour of the school.*

All of our facilities are available for hire during the school holiday period.

Catering is supplied by the school's qualified chefs who can meet all your catering needs, preparing delicious food ranging from a tasty snack through to formal dining.

Please email the school's Hire Coordinator on [bookings@cathedral.qld.edu.au](mailto:bookings@cathedral.qld.edu.au) to determine availability of the schools' facilities for your next function. Once confirmation has been received, an online booking form is required to secure a tentative booking.

**BOOK YOUR NEXT  
SPECIAL OCCASION  
AT CATHEDRAL!**

**Email: [bookings@cathedral.qld.edu.au](mailto:bookings@cathedral.qld.edu.au)**

LAGOON (RIGHT)





## LAGOON

*Stunning grounds overlooking the lagoon with surrounding rain trees and pristine gardens.*

- Undercover pergola “Birdcage”
- Fairy lights and verandah lighting
- Setup and clean up

**Option to include:**

- Tables and chairs
- White picket fencing



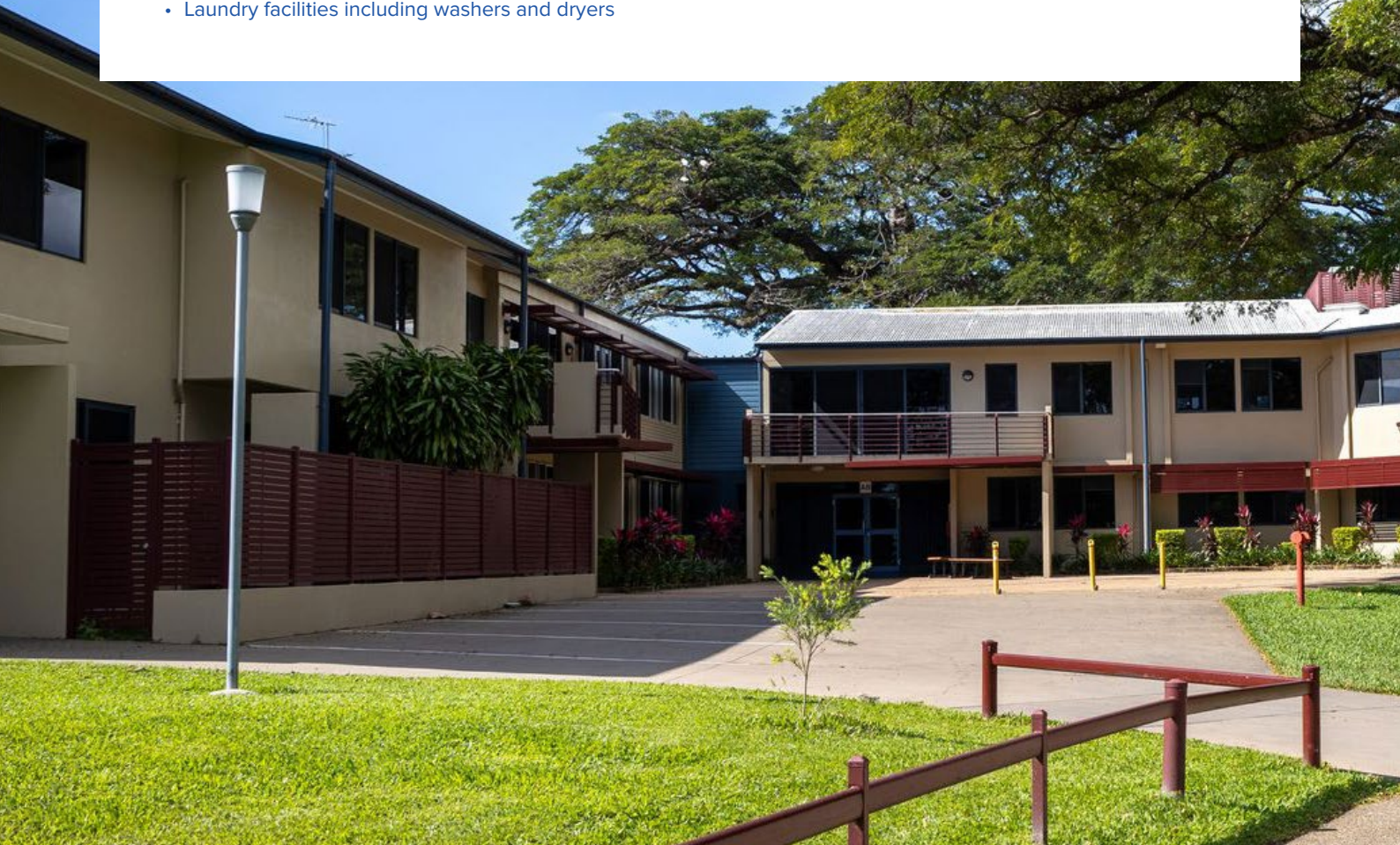
*BIRDCAGE*



## ACCOMMODATION

*The boarding dormitories can comfortably accommodate groups during the school holiday periods.*

- Single and shared rooms (doubles and quads)
- Shared bathroom facilities including disabled shower and toilet
- Laundry facilities including washers and dryers
- Recreational and lounge/common areas with TV, table tennis and pool table
- Kitchenettes including microwave and fridge



DORMITORY EXTERIOR



DORMITORY EXTERIOR



DORMITORY KITCHENETTE



*DORMITORY SHARED ROOM*



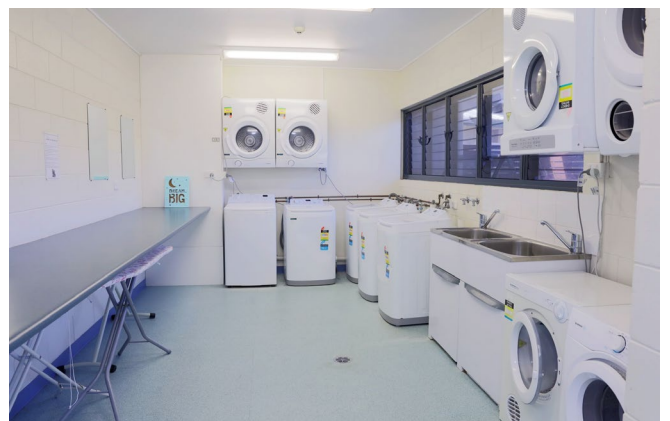
*DORMITORY SINGLE ROOM*



*DORMITORY BATHROOM*



*DORMITORY COMMON ROOM*



*DORMITORY LAUNDRY*



*ST MARY'S EXTERIOR*

## ST MARY'S

- 2 x Twin share
- 1 x Bunk and single bed
- Recreational/lounge area with TV
- Kitchenette
- Shared bathroom facilities
- Laundry facilities including washers and dryers



*ST MARY'S DINING ROOM*



*ST MARY'S COMMON ROOM AND KITCHENETTE*



*ST MARY'S BEDROOM*

## FACILITIES FOR HIRE

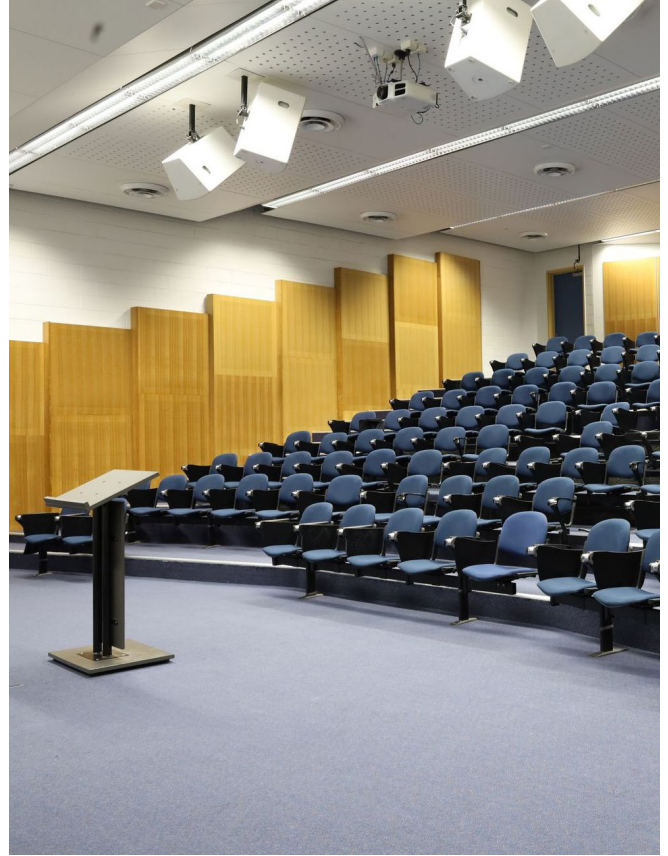
### LECTURE THEATRE

*The Lecture Theatre is perfect for presentations and conferences.*

**CAPACITY:**

**Seated – 145 people**

- Fully air-conditioned
- Theatre style tiered layout
- Multimedia presentation facilities
- Data projector with wireless projection and hi-fi audio
- Lectern (all connections inside)
- Wi-Fi on request (price on application)



LECTURE THEATRE

### DINING HALL

**CAPACITY:**

**Seated – 130 people**

**CAPACITY:**

**Standing – 200 people**

- Fully air-conditioned
- Television
- Plug in cabling for laptops
- Wired / Wireless microphones
- Lectern
- Sound system



DINING HALL

### CLASSROOMS (SINGLE OR 3 ADJACENT)

**CAPACITY:**

**Seated – 30 people, per classroom**

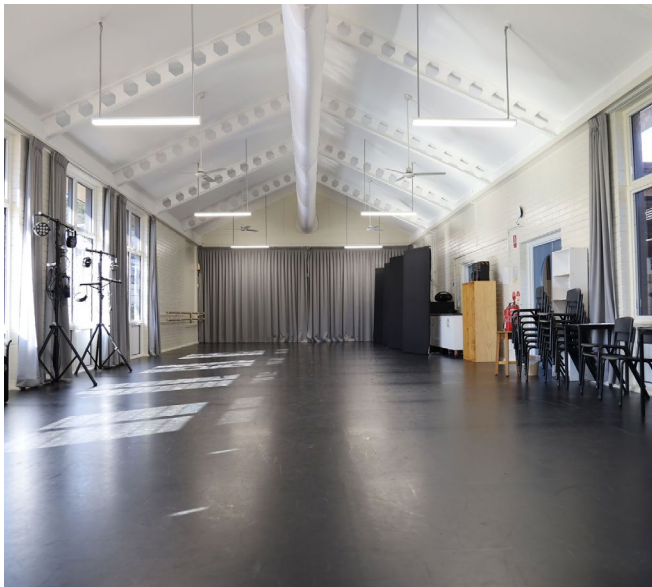
- Fully air-conditioned
- Teaching facilities
- Interactive touch screen television
- Standard classroom furniture



3 ADJACENT CLASSROOM



SINGLE CLASSROOM



GREEN HALL INTERIOR

## GREEN HALL

*The Green Hall is used as our Drama / Dance studio and is perfect for in-house productions / performances or rehearsals.*

- Fully air-conditioned
- Large open space
- Good lighting
- Sliding mirrored wall
- Ballet barre
- Portable TV and sound bar – wireless connection with Windows



GREEN HALL EXTERIOR

## BUS HIRE

*Hire a bus driver.*

- 3 x 33-seater bus
- 2 x 24-seater bus
- 3 x 12-seater bus





## FUNCTION LAWN

*Located adjacent to the Dining Hall.*

### CAPACITY:

Round Tables – 180 people (8-10 people / table)

### CAPACITY:

Square Tables – 200 people (8 people / table)

- Open-air area / space
- Dry bar hire (8 available)



FUNCTION LAWN



FUNCTION LAWN



*ROCK CENTRE KITCHEN AND SERVERY*



*ROCK CENTRE DRESSING ROOM*



*ROCK CENTRE STAGE AND SEATING*



*ROCK CENTRE STAGE*



## ROCK CENTRE

### CAPACITY:

Seated – 1,000 people

- Fully air-conditioned with fans
- Full stage (and back-stage area)
- 2 x Dressing rooms
- Projectors
- Extras: AV room and lighting hire (price on application)
- Extras: scrim hire (price on application)

## ROCK CENTRE FOYER

### CAPACITY:

Seated – 50 people

- Air-conditioned
- Floating timber look floor
- Kitchen bar with servery



ROCK CENTRE FOYER



OVAL



SPORTS PRECINCT: ASTRO TURF COURTS



OUTDOOR CEMENT COURTS



SPORTS PRECINCT: UNDERCOVER CEMENT COURTS

## SPORTS PRECINCT

- Architecturally designed to capture breezes
- Industrial fans and lighting
- 2 x Undercover courts
- 4 x Outdoor courts  
(line marked for tennis, basketball, volleyball & badminton)
- 2 x AstroTurf courts  
(line marked for hockey & futsal)



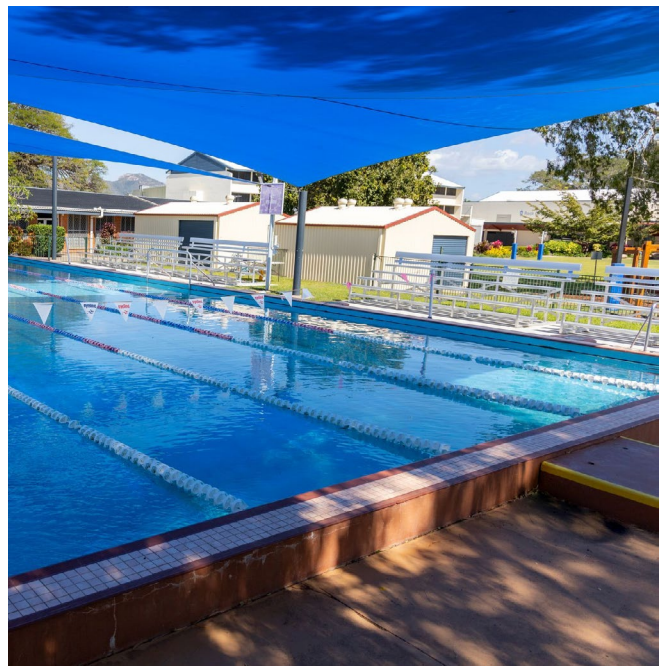




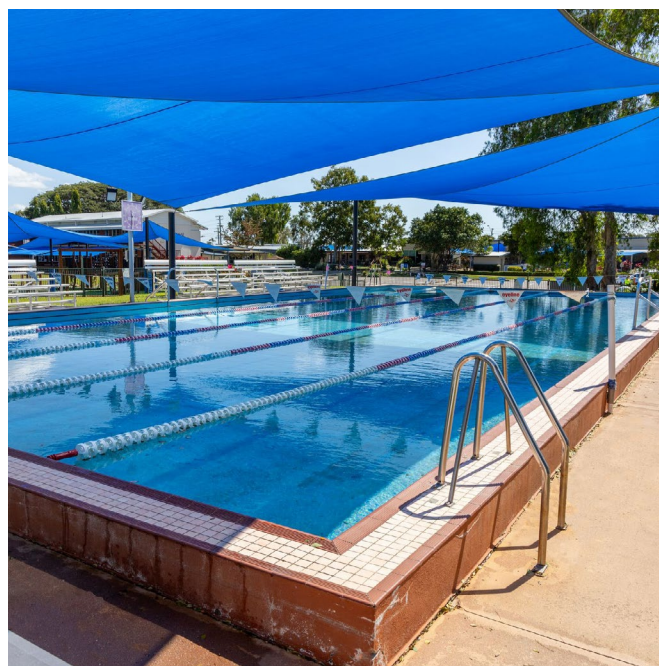
HEATED SWIMMING POOL

## SWIMMING POOL

- 25m heated pool
- Lane dividers for five lanes
- Shade sails
- Temporary grandstand seating for spectators



HEATED SWIMMING POOL



HEATED SWIMMING POOL

# BOOK YOUR NEXT SPECIAL OCCASION AT CATHEDRAL!

Email: [bookings@cathedral.qld.edu.au](mailto:bookings@cathedral.qld.edu.au)

## HIRE TERMS AND CONDITIONS

- A non-refundable deposit must be paid on booking confirmation. The deposit is calculated at one night's accommodation and meals per person.
- Full payment of the booking must be paid at least 7 days prior to arrival. A final invoice will be issued by the school with payment details. Final hire fees are non-refundable.
- A refundable bond fee of \$1000 is charged to hire groups with the final invoice. The bond will be refunded after any potential excess charges (i.e., extra cleaning, call outs etc.) have been deducted.
- You are to advise of any changes to accommodation and catering numbers 28 days prior to arrival. No changes will be permitted within 28 days of arrival.
- The hirer is responsible for ensuring that the school's facilities used by them are used and treated properly.
- Any loss or damage sustained during the course of a hire period will be charged to the hirer.
- Any misuse of fire safety equipment including the accidental activation of the fire alarm system will result in a charge being applied to the hirer.
- Smoking is strictly prohibited on the school property.
- The consumption/sale of alcohol must be approved by the school and be within legal requirements.
- All cancellations are to be advised via email to [bookings@cathedral.qld.edu.au](mailto:bookings@cathedral.qld.edu.au).



**The Cathedral School**  
of St Anne & St James  
T O W N S V I L L E

154 Ross River Rd, Mundingburra  
PO Box 944, Aitkenvale  
Queensland 4812 Australia

T. (07) 4722 2000  
F. (07) 4722 2111  
E. [tcs@cathedral.qld.edu.au](mailto:tcs@cathedral.qld.edu.au)

CRICOS 00959M  
ABN 54 090 829 806  
[www.cathedral.qld.edu.au](http://www.cathedral.qld.edu.au)

Educating for  
life-long success.